

PERFILES **LM**

A RELIABLE STEEL SOLUTION



Product catalog

Steel Division





LM Industrial Group was founded in 1964 and has more than 50 years in Mexico's manufacturing industry. Our group is integrated by 4 companies which actively participate in different industries like: steel, aluminum, and copper.

Each of these companies produce a variety of products such as: structural steel tubing, copper and aluminum electrical conductors (wire and cable), aluminum extruded profiles, tubing, and coated (galvanized and painted) steel coils.

INDEX

- GILM 2
- Index 3
- Introduction 4
- LM-HSS Structural tubing 6
- Mechanical tubing 10
- Squares 11
- Rectangulars 12
- Cee & Zee purlin 13
- Value added products 14
- Angles & "U" channel 15

We can supply our products in the following finishes by gauge.				
Gauge	Bare	Primed	Galvanized	Galvanized & painted
22	O/R	O/R	O/R	O/R
20	✓	✓	✓	✓
18	✓	✓	✓	✓
16	✓	✓	✓	O/R
14	✓	✓	✓	O/R
13	✓	O/R	O/R	O/R
12	✓	O/R	O/R	O/R
11	✓	O/R	N/A	N/A
0.125	✓	O/R	N/A	N/A
10	✓	O/R	N/A	N/A
7	✓	O/R	N/A	N/A
0.187	✓	O/R	N/A	N/A
4	✓	O/R	N/A	N/A
0.250	✓	O/R	N/A	N/A
0.280	✓	O/R	N/A	N/A
0.312	✓	O/R	N/A	N/A
0.375	✓	O/R	N/A	N/A
0.500	✓	O/R	N/A	N/A

O/R: On request
N/A: Not available

Perfiles LM, founded in 1964, is a manufacturer of square, rectangular, round steel tubing and purlins. We offer most of these products on bare, cold rolled, primed and galvanized finishes. We are one of the leading companies in México, and our products are sold in North, Central and South America. "LM", as we are known to many in the industry, has consolidated over more than 50 years of experience and leadership in the production and commercialization of steel building products, built to the highest standards.

We are constantly striving to increase our product line, to suit the needs of our customers and offer many options within these product families:

- Square, rectangular and round HSS Structural tubing.
- Square & rectangular tubing.
- Mechanical tubing.
- Industrial tubing.
- Cee and Zee purlins.
- U channels.
- Base angles.
- Punched purlins.
- Conduit tubing.
- Greenhouse tubing.
- Value added products.

Our products serve to the following industries:

- Construction.
- Furniture.
- Automotive.
- Material Handling.
- Farm (Fences, agricultural).
- Livestock control (Animal confinement).

The product weights in this catalogue, are expressed in kilograms and pounds and their variations are +/-5%.



LM has developed a continuous improvement program at all organization levels. This has allowed us to rapidly increase the number of satisfied customers, that rely on us to keep their businesses growing.

Certified operators, highest quality materials and modern equipment, combine to efficiently produce the best products in the industry.

We also offer value added features to most of our formed products through our continuous steel coil pre-painting line as well as a post-painting line, to complement our cold formed products.

All of our products are certified under ISO 9001:2015 norm, recognized by TUV America.



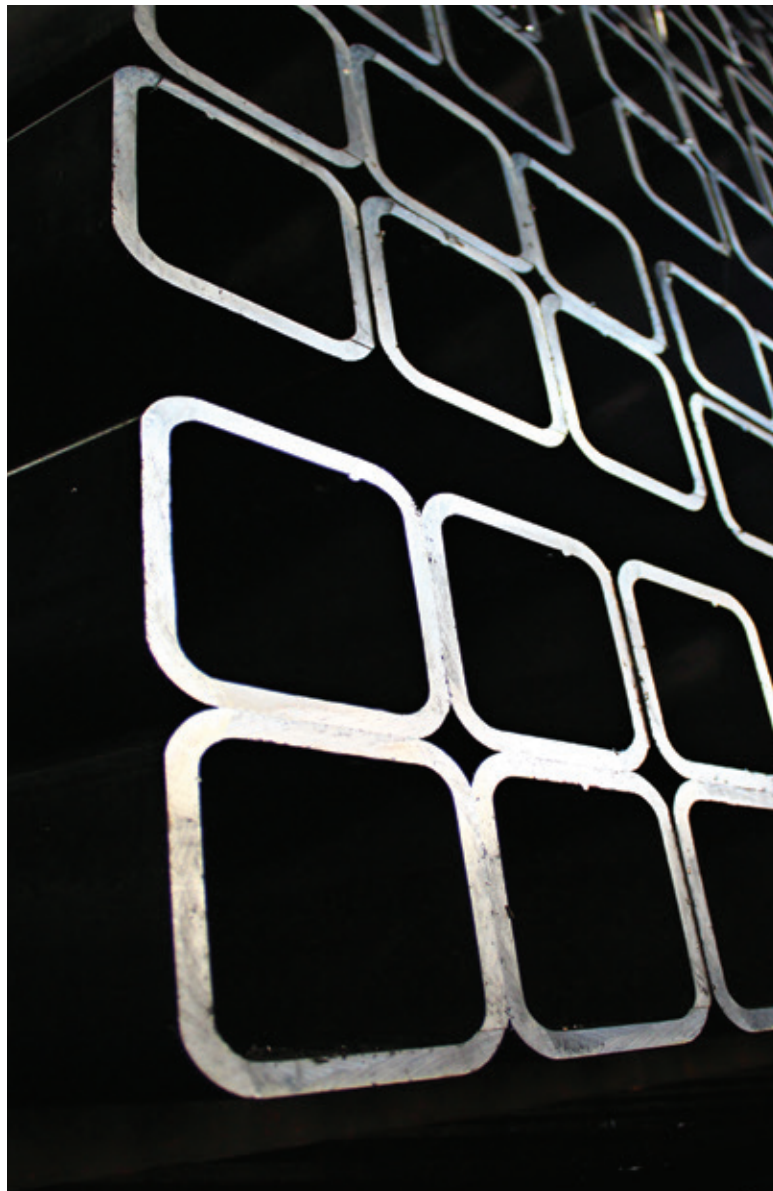
ISO 9001:2015



LM-HSS Structural tubing

Providing solutions to our customer needs, we present our line of LM-HSS (Hollow Structural Section) tubing.

Produced in our state of the art facility, located in Apodaca, N.L. Mexico, our products are second to none in terms of quality. We are certified to meet, exceed and satisfy all international quality standards, as they apply to cold-formed hollow sections.



USES OF LM-HSS STRUCTURAL TUBING

- CONSTRUCTION OF COMMERCIAL, INDUSTRIAL AND RESIDENTIAL BUILDINGS.
- ROAD PROTECTION, SIGNAGE AND LIGHT POLES.
- SUPPORT PILLARS, TRUSSES AND BEAMS.
- AGRICULTURAL, CONSTRUCTION AND INDUSTRIAL MACHINERY.
- BRIDGES AND WALKWAYS.
- STORAGE AND RACKING EQUIPMENT.
- EXERCISE EQUIPMENT.
- AUTOMOTIVE INDUSTRY.
- RAILWAY TRANSPORTATION.



LM-HSS Structural tubing

Norm "ASTM A-500" grades "B" & "C", standard length 40 ft

SQUARE HSS							
MEASURE		NOM. MAT. THICKNESS			WEIGHT		
INCHES	MM	INCHES		MM	LB/FT	KG/M	KG/12.20 M
4"	101.60	1/8"*	0.125*	3.175	6.55	9.75	118.91
		3/16"	0.187	4.750	9.19	13.68	166.90
		1/4"	0.250	6.350	12.33	18.34	223.80
		5/16"	0.312	7.925	14.58	21.70	264.69
		3/8"	0.375	9.525	17.33	25.78	314.52
6"	152.40	1/8"*	0.125*	3.175	9.97	14.84	180.99
		3/16"	0.187	4.750	13.73	20.43	249.29
		1/4"	0.250	6.350	18.42	27.41	334.36
		5/16"	0.312	7.925	22.91	34.08	415.81
		3/8"	0.375	9.525	26.70	39.73	484.67
		1/2"	0.500	12.70	34.84	51.85	632.55
8"	203.20	3/16"	0.187	4.750	18.95	28.19	343.96
		1/4"	0.250	6.350	25.12	37.38	456.09
		5/16"	0.312	7.925	30.78	45.80	558.79
		3/8"	0.375	9.525	36.72	54.64	666.57
		1/2"	0.500	12.70	48.29	71.86	876.68
10"	254.00	3/16"	0.187	4.750	23.34	34.72	423.64
		1/4"	0.250	6.350	31.52	46.90	572.24
		5/16"	0.312	7.925	38.72	57.62	702.92
		3/8"	0.375	9.525	45.71	68.01	829.74
		1/2"	0.500	12.700	59.79	88.97	1085.38

The values shown in this table, are for reference only. Perfiles LM is not responsible for misinterpretation or variations in such values. * On request
 For the calculation and / or selection of materials to use, it is suggested to contact a calculation engineer.

Upon customer request, LM-HSS can be produced under ASTM 1085 Standard.

If you require different products than mentioned, please contact your sales executive.

SALES DEPARTMENT

sales@perfileslm.com

+52 (81) 8133 0000 Ext.1037

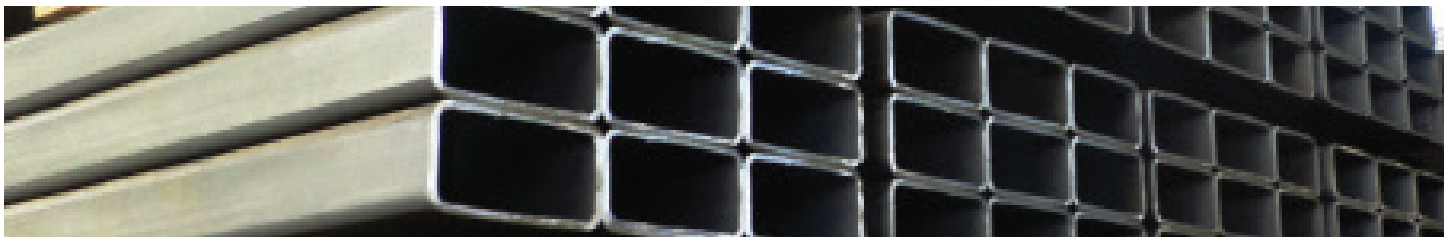


LM-HSS Structural tubing

Norm "ASTM A-500" grades "B" & "C", standard length 40 ft

RECTANGULAR HSS							
MEASURE		NOM. MAT. THICKNESS		WEIGHT			
INCHES	MM	INCHES	MM	LB/FT	KG/M	KG/ 12.20 M	
6" x 4"	152.40 x 101.60	1/8"*	0.125*	3.175	8.16	12.14	148.13
		3/16"	0.187	4.750	11.58	17.23	210.20
		1/4"	0.250	6.350	15.53	23.10	281.87
		5/16"*	0.312*	7.925	19.08	28.39	346.37
		3/8"	0.375	9.525	22.27	33.14	404.28
8" x 4"	203.20 x 101.60	1/8"*	0.125*	3.175	9.86	14.67	178.99
		3/16"	0.187	4.750	13.73	20.43	249.24
		1/4"	0.250	6.350	18.42	27.41	334.38
		5/16"	0.312	7.391	22.91	34.08	415.82
		3/8"	0.375	9.525	26.70	39.73	484.72
		1/2"	0.500	12.70	34.84	51.85	632.55
8" x 6"	203.20 x 152.40	3/16"	0.187	4.750	16.43	24.44	298.19
		1/4"	0.250	6.350	21.94	32.65	398.33
10" x 4"	254.20 x 101.60	5/16"*	0.312*	7.391	27.59	41.05	500.86
		3/8"*	0.375*	9.525	31.98	47.59	580.55
		1/2"*	0.500*	12.700	42.06	62.59	763.54
10" x 6"	254.00 x 152.40	3/16"	0.187	4.750	18.95	28.19	343.96
		1/4"	0.250	6.350	25.12	37.38	456.09
		5/16"	0.312	7.391	30.78	45.80	558.79
		3/8"	0.375	9.525	36.72	54.64	666.57
		1/2"	0.500	12.700	48.29	71.86	876.68
12" x 6"	304.80 x 152.40	3/16"	0.187	4.750	21.15	31.47	383.95
		1/4"	0.250	6.350	28.19	41.95	511.76
		5/16"	0.312	7.391	34.35	51.11	623.55
		3/8"	0.375	9.525	41.21	61.32	748.08
		1/2"	0.500	12.700	53.63	79.80	973.58
12" x 8"	304.80 x 203.20	3/16"	0.187	4.750	23.34	34.72	423.64
		1/4"	0.250	6.350	31.52	46.90	572.24
		5/16"	0.312	7.391	38.72	57.62	702.92
		3/8"	0.375	9.525	45.71	68.01	829.74
		1/2"	0.500	12.700	59.79	88.97	1085.38

The values shown in this table, are for reference only. Perfiles LM is not responsible for misinterpretation or variations in such values. * On request
 For the calculation and / or selection of materials to use, it is suggested to contact a calculation engineer.



LM-HSS Structural tubing

Norm "ASTM A-500" grades "B" & "C", standard length 40 ft

ROUND HSS										
MEASURE		NOM. MAT. THICKNESS		WEIGHT						
INCHES	O.D./MM	GAUGE	INCHES	KG/M	KG/12.20 M	PIECES PER BUNDLE	POUNDS PER FT	POUNDS PER PIECE	POUNDS PER BUNDLE	POUNDS PER METER
4"	4.500" 114.300	1/8"*	0.125*	8.85	108.01	19	5.95	238.00	4522.00	19.51
		3/16"*	0.187*	12.37	150.86	19	8.31	332.40	6315.60	27.25
6"	6.625" 168.300	1/8"	0.125*	13.25	161.68	7	8.91	356.25	2493.78	29.20
		3/16"*	0.187*	18.18	221.84	7	12.22	488.80	3421.60	40.07
		1/4"	0.250	24.44	298.11	7	16.42	656.86	4597.99	53.84
		5/16"*	0.312*	30.09	367.07	7	20.22	808.80	5661.60	66.30
		3/8"*	0.375*	36.02	439.50	7	24.21	968.40	6778.80	79.38
		1/2"*	0.500*	51.60	629.57	7	34.68	1387.20	9710.40	113.70
7"	7.625" 193.700	1/8"*	0.125*	15.06	183.71	4	10.12	404.80	1619.20	33.18
		3/8"*	0.375*	41.86	510.66	4	28.13	1125.20	4500.80	92.23
8"	8.625" 219.100	3/16"	0.187	24.18	294.97	4	16.25	649.94	2599.75	53.27
		1/4"	0.125	32.28	393.80	4	21.69	867.70	3470.80	71.12
		5/16"	0.312	39.01	475.95	4	26.22	1048.71	4194.85	85.96
		3/8"	0.375	47.12	574.89	4	31.67	1266.72	5066.87	103.83
		1/2"	0.500	67.19	819.73	4	45.16	1806.21	7224.83	148.05
10"	10.750" 273.100	1/4"	0.250	39.67	484.00	4	26.66	1066.45	4265.79	87.41
		3/8"*	0.375*	59.52	726.17	4	40.00	1600.06	6400.23	131.15
		1/2"*	0.500*	84.33	1028.79	4	56.67	2266.85	9067.40	185.81
12"	12.750" 323.900	1/4"*	0.250*	48.15	587.43	4	32.36	1294.34	5177.38	106.09
		3/4"*	0.375*	70.77	863.40	4	47.56	1902.44	7609.77	155.94
		1/2"	0.500	100.46	1225.57	2	67.51	2700.43	5400.87	221.35

The values shown in this table, are for reference only. Perfiles LM is not responsible for misinterpretation or variations in such values. * On request For the calculation and / or selection of materials to use, it is suggested to contact a calculation engineer.



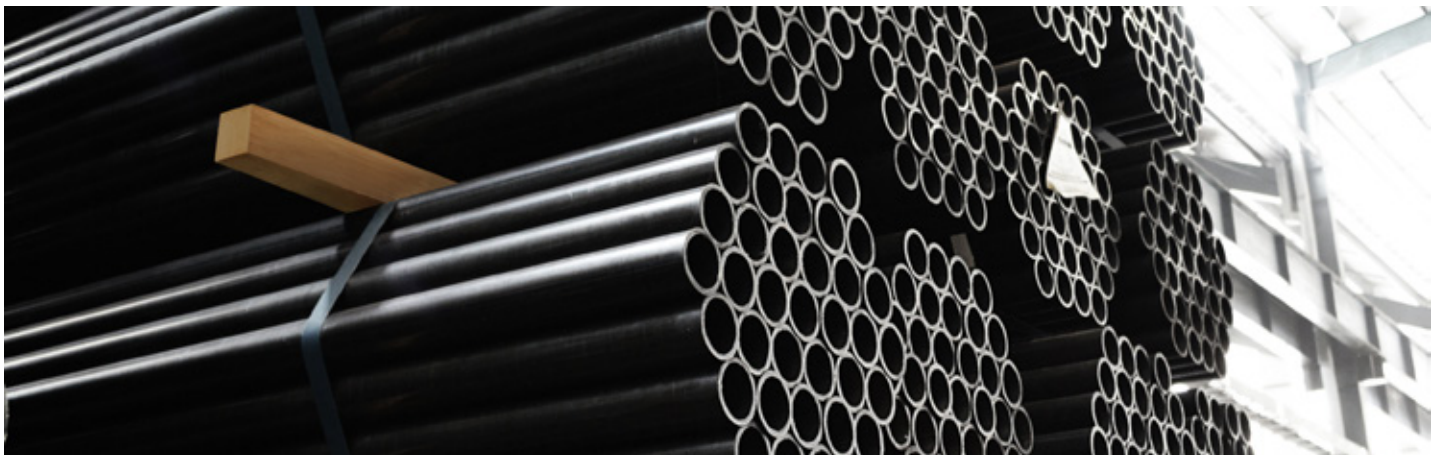
Mechanical tubing

Standard lenght 20 ft, other lenghts upon request.

MECHANICAL TUBING									
MEASURE	NOM. THICKNESS (INCHES)	GAUGE SIZE	FINISH	WEIGHT/KG. PER PIECE	PIECES PER BUNDLE	POUNDS PER FT	POUNDS PER PIECE	POUNDS PER BUNDLE	POUNDS PER METER
0.840"	0.0727	14	BLACK	5.89	217	0.649	12.989	2818.641	2.129
	0.1050	12	BLACK	8.21	217	0.905	18.097	3927.152	2.967
1.050"	0.0727	14	BLACK	7.30	169	0.804	16.082	2717.821	2.636
	0.0890	13*	BLACK	9.01	169	0.993	19.864	3356.953	3.256
	0.1050	12	BLACK	10.31	169	1.136	22.716	3838.989	3.724
1.250"	0.1190	11*	BLACK	11.28	169	1.243	24.868	4202.711	4.077
	0.0727	14	BLACK	8.55	91	0.942	18.846	1714.984	3.090
1.315"	0.1050	12*	BLACK	12.23	91	1.348	26.963	2453.588	4.420
	0.0727	14	BLACK	9.12	127	1.005	20.100	2552.668	3.295
1.500"	0.0890	13*	BLACK	11.33	127	1.249	24.978	3172.250	4.095
	0.1050	12*	BLACK	13.28	127	1.464	29.277	3718.224	4.800
	0.1190	11*	BLACK	14.30	127	1.576	31.526	4003.810	5.168
1.660"	0.0727	14*	BLACK	10.67	127	1.176	23.523	2987.459	3.856
	0.1050	12*	BLACK	15.19	127	1.674	33.488	4252.999	5.490
1.900"	0.0727	14	BLACK	11.73	91	1.292	25.850	2352.314	4.238
	0.1050	12*	BLACK	16.81	91	1.853	37.060	3372.429	6.075
	0.1190	11	BLACK	18.75	91	2.065	41.308	3759.022	6.772
	0.1350	10	BLACK	20.80	91	2.291	45.822	4169.801	7.512
2.375"	0.0727	14	BLACK	13.19	91	1.453	29.057	2644.177	4.763
	0.1050	12*	BLACK	18.99	91	2.093	41.866	3809.782	6.863
	0.1190	11*	BLACK	20.46	91	2.255	45.107	4104.694	7.395
	0.1350	10*	BLACK	23.95	91	2.640	52.801	4804.859	8.656
2.875"	0.1350	10	BLACK	30.57	37	3.368	67.359	2492.268	11.042
4.500"	0.1350	10	BLACK	36.89	37	4.064	81.273	3007.112	13.323
	0.1730	8*	BLACK	47.84	37	5.273	105.469	3902.354	17.290
	0.1790	7	BLACK	76.75	19	8.455	169.107	3213.039	27.723

The values shown in this table, are for reference only. Perfiles LM is not responsible for misinterpretation or variations in such values. For the calculation and / or selection of materials to use, it is suggested to contact a calculation engineer.

* On request



Squares

Standard length 20 ft, other lengths upon request.

SQUARES									
SIZE	NOM. THICKNESS (INCHES)	GAUGE SIZE	FINISH	WEIGHT/KG. PER PIECE	PIECES PER BUNDLE	POUNDS PER FT	POUNDS PER PIECE	POUNDS PER BUNDLE	POUNDS PER METER
0.50" x 0.50"	0.0600"	16	BLACK/PRIMED	3.46	225	0.38	7.63	1717.29	1.25
0.75" x 0.75"	0.0600"	16	BLACK/PRIMED	5.45	121	0.60	12.00	1452.00	1.97
	0.0727"	14	BLACK/PRIMED	6.21	121	0.68	13.70	1657.37	2.25
1.0" x 1.0"	0.0600"	16	BLACK/PRIMED	7.16	100	0.79	15.79	1579.39	2.59
	0.0727"	14	BLACK/PRIMED	8.55	100	0.94	18.86	1885.83	3.09
	0.0747"	14	GALV-G90	8.80	64	0.97	19.39	1240.94	3.18
1.25" x 1.25"	0.0600"	16	BLACK/PRIMED	8.99	81	0.99	19.80	1603.80	3.25
	0.0727"	14	BLACK/PRIMED	10.80	81	1.19	23.81	1928.42	3.90
	0.0747"	14	GALV-G90	11.10	64	1.22	24.48	1566.59	4.01
1.5" x 1.5"	0.0600"	16	BLACK/PRIMED	10.80	64	1.19	23.81	1523.97	3.90
	0.0727"	14	BLACK/PRIMED	13.04	64	1.44	28.75	1840.31	4.71
	0.0747"	14	GALV-G90	13.41	64	1.48	29.56	1892.09	4.85
	0.1140"	11	BLACK/PRIMED	20.42	64	2.25	45.02	2881.17	7.38
	0.1730"	7	BLACK/PRIMED	29.40	64	3.24	64.80	4147.51	10.62
2.0" x 2.0"	0.0600"	16	BLACK/PRIMED	14.37	56	1.60	32.08	1796.20	5.26
	0.0727"	14	BLACK/PRIMED	17.40	56	1.92	38.35	2147.56	6.29
	0.0747"	14	GALV-G90	17.94	56	1.98	39.55	2214.85	6.48
	0.1140"	11	BLACK/PRIMED	27.68	36	3.05	61.00	2196.00	10.00
	0.1730"	7	BLACK/PRIMED	40.08	36	4.42	88.37	3181.32	14.49
	0.2350"	1/4	BLACK	53.83	20	5.93	118.60	2372.00	19.44
2.25" x 2.25"	0.0727"	14 *	BLACK/PRIMED	19.46	56	2.15	42.91	2402.88	7.03
	0.0747"	14 *	GALV-G90	20.13	56	2.22	44.37	2484.61	7.27
2.5" x 2.5"	0.0727"	14	BLACK/PRIMED	21.88	30	2.41	48.20	1446.00	7.90
	0.0747"	14	GALV-G90	22.52	30	2.48	49.64	1489.31	8.14
	0.1140"	11	BLACK/PRIMED	34.67	25	3.82	76.40	1910.00	12.52
	0.1730"	7	BLACK/PRIMED	50.74	30	5.59	111.80	3354.00	18.33
	0.2350"	1/4	BLACK	68.35	20	7.53	150.60	3012.00	24.69
3.0" x 3.0"	0.0727"	14	BLACK/PRIMED	26.37	36	2.91	58.14	2093.13	9.53
	0.0747"	14	GALV-G90	27.12	36	2.99	59.78	2152.10	9.80
	0.1140"	11	BLACK/PRIMED	41.75	36	4.60	92.00	3312.00	15.08
	0.1730"	7	BLACK/PRIMED	61.45	30	6.77	135.40	4062.00	22.20
	0.2350"	1/4	BLACK	82.87	20	9.13	182.60	3652.00	29.93
4.0" x 4.0"	0.0727"	14	BLACK/PRIMED	35.31	30	3.89	77.80	2334.00	12.75
	0.0747"	14	GALV-G90	36.31	30	4.00	80.00	2400.00	13.11
	0.1140"	11	BLACK/PRIMED	55.10	30	6.07	121.40	3642.00	19.90
	0.1730"	7	BLACK/PRIMED	82.84	24	9.13	182.63	4383.19	29.94
	0.2350"	1/4	BLACK	111.92	20	12.33	246.60	4932.00	40.43

The values shown in this table, are for reference only. Perfiles LM is not responsible for misinterpretation or variations in such values. For the calculation and / or selection of materials to use, it is suggested to contact a calculation engineer.

Grade B steel for gauges 11 and thicker.

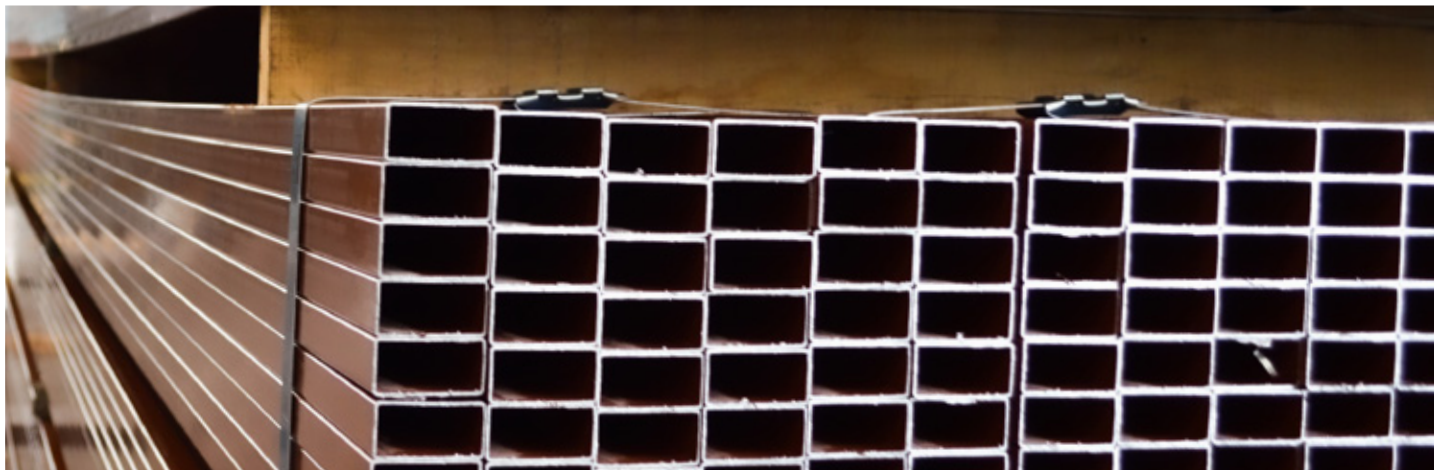
Rectangulars

Standard length 20 ft, other lengths upon request.

RECTANGULARS									
MEASURE	NOM. THICKNESS (INCHES)	GAUGE SIZE	FINISH	WEIGHT/KG. PER PIECE	PIECES PER BUNDLE	POUNDS PER FT	POUNDS PER PIECE	POUNDS PER BUNDLE	POUNDS PER METER
2.0" x 1.0"	0.0727"	14	BLACK/PRIMED	13.042	60	1.437	28.736	1724.162	4.711
	0.0747"	14	GALV-G90	13.409	60	1.477	29.545	1772.716	4.843
3.0" x 1.5"	0.0727"	14	BLACK/PRIMED	19.650	48	2.165	43.297	2078.261	7.098
	0.0747"	14	GALV-G90	20.191	48	2.224	44.489	2135.460	7.293
	0.1140"	11	BLACK/PRIMED	31.253	48	3.443	68.864	3305.451	11.289
3.0" x 2.0"	0.0727"	14	BLACK/PRIMED	21.882	48	2.411	48.214	2314.288	7.904
	0.0747"	14	GALV-G90	22.498	48	2.479	49.571	2379.431	8.126
	0.1140"	11	BLACK/PRIMED	34.686	48	3.821	76.429	3668.585	12.529
	0.1730"	7	BLACK/PRIMED	50.767	48	5.593	111.862	5369.372	18.338
	0.2350"	1/4	BLACK	68.345	20	7.530	150.593	3011.858	24.687
4.0" x 2.0"	0.0727"	14	BLACK/PRIMED	26.370	36	2.905	58.104	2091.758	9.525
	0.0747"	14	GALV-G90	27.113	36	2.987	59.741	2150.689	9.794
	0.1140"	11	BLACK/PRIMED	41.729	36	4.597	91.947	3310.107	15.073
	0.1730"	7	BLACK/PRIMED	61.456	36	6.771	135.414	4874.899	22.199
	0.2350"	1/4	BLACK	82.863	24	9.129	182.583	4381.990	29.932
4.0" x 3.0"	0.1140"	11	BLACK/PRIMED	48.772	24	5.373	107.466	2579.183	17.617
	0.1730"	7	BLACK/PRIMED	72.191	16	7.953	159.068	2545.084	26.077
6.0" x 2.0"	0.0727"	14	BLACK/PRIMED	35.347	24	3.894	77.885	1869.228	12.768
	0.0747"	14	GALV-G90	36.343	24	4.004	80.079	1921.893	13.128
	0.1140"	11	BLACK/PRIMED	55.111	24	6.072	121.433	2914.384	19.907
	0.1730"	7	BLACK/PRIMED	82.832	24	9.126	182.513	4380.321	29.920
	0.2350"	1/4	BLACK	111.900	20	12.328	246.563	4931.258	40.420

The values shown in this table, are for reference only. Perfiles LM is not responsible for misinterpretation or variations in such values. For the calculation and / or selection of materials to use, it is suggested to contact a calculation engineer.

Grade B steel for gauges 11 and thicker.



Cee & Zee purlins

Standard length 20 ft, other lengths upon request.

CEE PURLIN									
MEASURE	NOM. THICKNESS (INCHES)	GAUGE SIZE	FINISH	WEIGHT/KG. PER PIECE	PIECES PER BUNDLE	POUNDS PER FT	POUNDS PER PIECE	POUNDS PER BUNDLE	POUNDS PER METER
3" x 1.5"	0.0727"	14	PRIMED	14.590	96	1.61	32.17	3087.88	5.27
3" x 1.5"	0.0747"	14	GALV-G90	15.000	96	1.65	33.07	3174.65	5.42
4" x 1.5"	0.0727"	14	PRIMED	17.182	96	1.89	37.88	3636.46	6.21
4" x 1.5"	0.0747"	14	GALV-G90	17.666	96	1.95	38.95	3738.89	6.38
4" x 2"	0.0727"	14	PRIMED	19.154	96	2.11	42.21	4052.13	6.92
4" x 2"	0.0747"	14	GALV-G90	19.685	96	2.17	43.40	4166.20	7.11
5" x 1.5"	0.0727"	14*	PRIMED	18.974	96	2.09	41.83	4015.72	6.86
5" x 1.5"	0.0747"	14*	GALV-G90	19.685	96	2.17	43.40	4166.20	7.11
5" x 2"	0.0727"	14	PRIMED	21.198	96	2.37	47.40	4550.40	7.77
5" x 2"	0.0747"	14	GALV-G90	19.685	96	2.37	47.40	4550.40	7.77
6" x 2"	0.0727"	14	PRIMED	23.602	96	2.60	52.00	4992.00	8.52
6" x 2"	0.0747"	14	GALV-G90	24.329	96	2.68	53.57	5143.15	8.78
7" x 2.75"	0.0727"	14	PRIMED	29.194	50	3.25	65.00	3250.00	10.66
7" x 2.75"	0.0747"	14	GALV-G90	30.289	50	3.34	66.78	3338.79	10.95
8" x 2.5"	0.0727"	14	PRIMED	30.320	50	3.34	66.80	3340.00	10.95
8" x 2.5"	0.0747"	14	GALV-G90	31.220	50	3.44	68.80	3440.00	11.28
10" x 2.75"	0.0727"	14	PRIMED	36.474	40	4.02	80.41	3216.45	13.18
10" x 2.75"	0.0747"	14	GALV-G90	37.501	40	4.10	82.00	3280.00	13.44
12" x 3.5"	0.0727"	14	PRIMED	43.931	30	4.89	97.80	2934.00	16.03
12" x 3.5"	0.0747"	14	GALV-G90	45.578	30	5.02	100.48	3014.47	16.47

ZEE PURLIN									
MEASURE	NOM. THICKNESS (INCHES)	GAUGE SIZE	FINISH	WEIGHT/KG. PER PIECE	PIECES PER BUNDLE	POUNDS PER FT	POUNDS PER PIECE	POUNDS PER BUNDLE	POUNDS PER METER
4" x 2"	0.0727"	14	PRIMED	19.154	50	2.11	42.21	2110.42	6.92
4" x 2"	0.0747"	14	GALV-G90	19.685	50	2.17	43.40	2170.00	7.11
6" x 2"	0.0727"	14	PRIMED	23.602	50	2.60	52.00	2600.00	8.52
6" x 2"	0.0747"	14	GALV-G90	24.329	50	2.68	53.57	2678.50	8.78
8" x 2.5"	0.0727"	14	PRIMED	30.320	50	3.34	66.80	3340.00	10.95
8" x 2.5"	0.0747"	14	GALV-G90	31.220	50	3.44	68.80	3440.00	11.28

The values shown in this table, are for reference only. Perfiles LM is not responsible for misinterpretation or variations in such values. For the calculation and / or selection of materials to use, it is suggested to contact a calculation engineer.

VALUE ADDED PROCESSES

With **value added** processes that **Perfiles LM** can offer to its customers, included cut to length, laser cut, bending, for the furniture manufacturing, car bodies, greenhouses, appliances and automotive, which seeks to position **Perfiles LM** in all segments, due to the high quality of its products, cutting-edge processes and service commitment.

Perfiles LM has developed strategic alliances with the best machinery manufacturers worldwide, which coupled with the quality of products that has characterized our company for more than fifty-five years and the commitment of its staff with continuous improvement, make the best option in the products and services it offers.

Laser-cutting

- Processable round tube: min. 12 mm (0.5") - max. 152.4 mm (6")
- Processable square tube: min. 12 mm (0.5") - max. 152.4 x 152.4 mm (6" x 6")
- Open and special profiles
- All automatic settings
- 3D cutting



Cut to length

- Cutting capacity round tube min. 8 mm (0.31") - max. 102 mm (4")
- Cutting capacity square tube min. 10 x 10 mm (0.39" x 0.39")
 - max. 80 x 80 mm (3.14" x 3.14")
- Cutting capacity rectangular tube min. 15 x 10 mm (0.59" x 0.39")
 - max. 100 x 80 mm (3.93" x 3.14")
- Minimum cutting length 20 mm (0.78")
- Maximum cutting length 4500 mm (177.16")



Tube bender

- Max. tube O.D. capacity (round tube) \varnothing 80 x 2.0 mm (3.15" x 0.08")
- Max. bending radius 270 mm (10.63")



Angles & "U" channel

Standard length 20 ft, other lengths upon request.

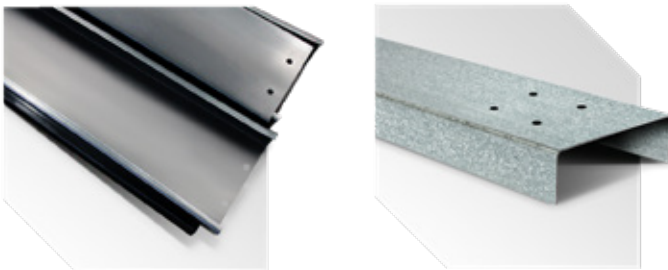
ANGLES									
MEASURE	NOM. THICKNESS (INCHES)	GAUGE SIZE	FINISH	WEIGHT/KG. PER PIECE	PIECES PER BUNDLE	POUNDS PER FT	POUNDS PER PIECE	POUNDS PER BUNDLE	POUNDS PER METER
2" x 2"	0.0727"	14	PRIMED	8.532	100	0.94	18.80	1880.00	3.08
3" x 2"	0.0727"	14	PRIMED	10.819	100	1.19	23.85	2385.18	3.91
4" x 2"	0.0727"	14	PRIMED	13.070	100	1.44	28.80	2879.90	4.72

U CHANNEL									
MEASURE	NOM. THICKNESS (INCHES)	GAUGE SIZE	FINISH	WEIGHT/KG. PER PIECE	PIECES PER BUNDLE	POUNDS PER FT	POUNDS PER PIECE	POUNDS PER BUNDLE	POUNDS PER METER
4" x 2"	0.0727"	14	PRIMED	19.146	48	2.11	42.21	2026.06	6.92
6" x 2.5"	0.0727"	14	PRIMED	23.632	48	2.60	52.07	2499.46	8.54
8" x 3"	0.0727"	14	PRIMED	30.301	50	3.34	66.80	3340.11	10.95
4" x 5"	0.0747"	14	GALV-G90	18.118	50	2.00	39.92	1996.08	6.54

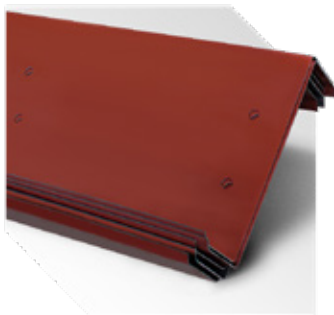
The values shown in this table, are for reference only. Perfiles LM is not responsible for misinterpretation or variations in such values. For the calculation and / or selection of materials to use, it is suggested to contact a calculation engineer.

PURLIN PERFORATION

Cee purlin & "U" channel



Zee purlin



Perforation available for 3" to 14" purlins and channel U.

Lengths:

min. 2.44 m - max. 14.60 m

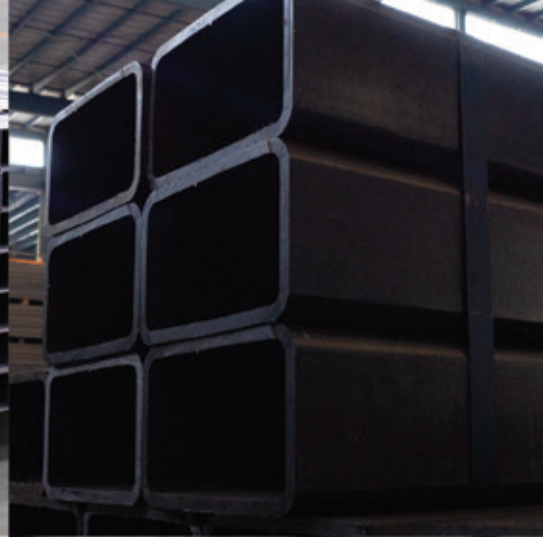
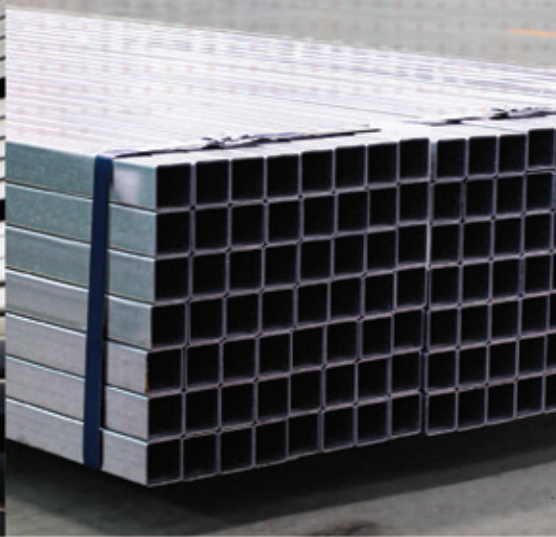
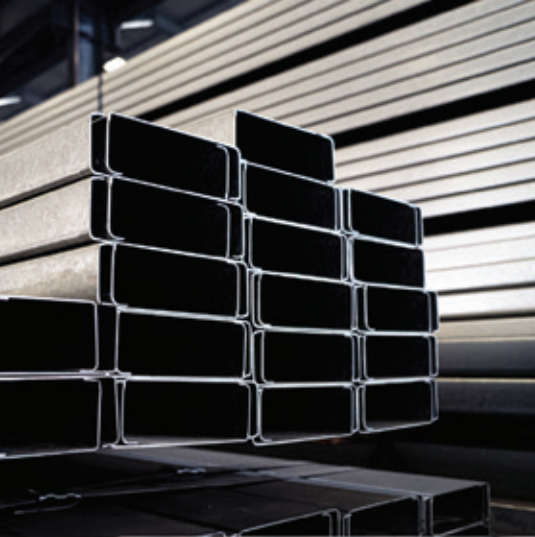
Gauge:

10, 12, 14 and 16

Finishes:

Natural, Red paint and Natural galvanized

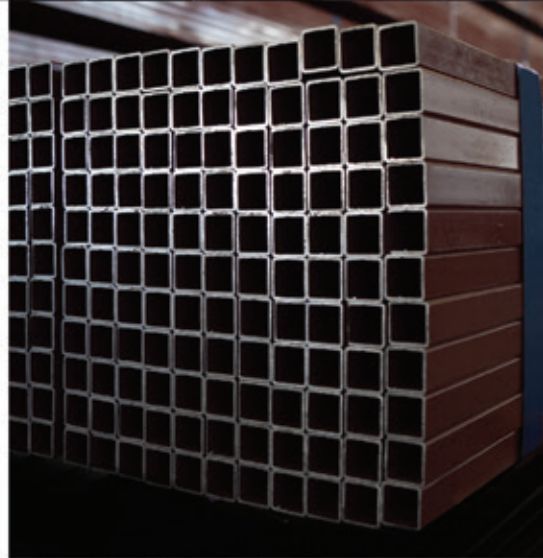
Ask your sales representative for standard perforation sizes.



PERFILES **LM**

A RELIABLE
STEEL
SOLUTION

www.perfileslm.com



MONTERREY

Blvd. Carlos Salinas de Gortari km 8.5
Col. Valle del Mezquital
Apodaca, N.L. México, C.P. 66632
☎ +52 (81) 8133 0000 Ext. 1037
✉ sales@perfileslm.com

F3-8.2.2-02
01/21
Copyright © Perfiles LM, SA de CV. All rights reserved,
prohibited the total or partial reproduction.

Steel Division |  **GILM**
GRUPO INDUSTRIAL LM

Our companies

